

Galaxy Book Business

SAMSUNG
S-ACADEMY
B2B

Table of contents

1. Introduction

A.	Samsung expands their portfolio with laptops	4
B.	Powerful laptops and Chromebooks	4
C.	Galaxy Book Business vs. Galaxy Chromebook	5
D.	Easy working through one ecosystem	5

2. Unique features

A.	Security to the core	6
B.	Durable and strong	6
C.	Smart multitasking using the S Pen	6
D.	360 degree hinge for flexible use	6

3. Impressive performance

A.	Powerful laptops for every use	7
B.	Displays & sizes	7
C.	Efficient and fast processors	7
D.	Lightning fast internal storage	8
E.	Get through the day without charging	8
F.	Fast internet, everywhere	8
G.	Smart connections and ports	8



Table of contents

4. Useful Samsung features

A.	Galaxy Book Smart Switch	9
B.	Samsung DeX	9
C.	Quick Share	9
D.	Private Share	9
E.	Second Screen	9
F.	Multi Control	10
G.	Link to Windows	10
H.	One UI Book 4.0	10

5. Specifications

A.	Galaxy Book2 Business	NP641BEF-KA2NL / NP641BEF-KA2BE	11
B.	Galaxy Book2 Business	NP641BEF-KA3NL / NP641BEF-KA3BE	11
C.	Galaxy Book2 Business	NP641BEF-KA1NL / NP646BED-KA1BE	12
D.	Galaxy Book2 Business	NP750XED-KB4NL / NP754XED-KB1BE	12
E.	Galaxy Book2 Pro 360 Business	NP930QED-KJ1NL / NP934QED-KJ1BE	13
F.	Galaxy Chromebook Go	XE340XDA-KA2NL / XE340XDA-KA2BE	13
G.	Galaxy Chromebook Go	XE345XDA-KA1NL / XE345XDA-KA1BE	14
H.	Galaxy Chromebook2 360	XE520QEA-KB1NL / XE520QEA-KB1BE	14



1. Introduction

Samsung expands their portfolio with laptops

Working anywhere. Nowadays, it is not just a preference for users or organizations; clients expect their partners to be available at all times, as well. Working with more ease and flexibility means reaching your goals even faster. That is why Samsung expands its business portfolio with laptops and Chromebooks through the all-new Galaxy Book Business portfolio.

Galaxy Book laptops and Chromebooks are designed to offer professionals a premium mobile experience. Futureproof hardware and cutting edge connectivity ensure that the devices can be used for years to come. Powerful batteries enable the laptops to make it through an entire day of work. In addition, the devices are optimally protected thanks to powerful security on both hardware and software levels.

Powerful laptops and Chromebooks

With the new Galaxy Book Business series, Samsung adds two new types of devices to their portfolio: laptops and Chromebooks. Both offer value to every hybrid professional in their own ways.

Galaxy Book Business laptops

These Windows laptops combine powerful hardware with futureproof connectivity and plenty of internal storage. These devices offer organizations versatility and longevity. The laptops come in various versions, with and without an S Pen. Galaxy Book Business laptops are portable powerhouses, tailored towards organizations that work with Microsoft applications and have built their IT systems around the Microsoft ecosystem.



The following Galaxy Book Business laptops are currently available:

- Galaxy Book2 Business
- Galaxy Book2 Pro 360 Business

Galaxy Chromebooks

Chromebooks run Chrome OS. They are tailored towards organizations that work in the cloud, either largely or completely, using Google Suite, Microsoft 365 or other apps in the Google Play Store. That does not require the powerful hardware other laptops need. Therefore, a Chromebook is more specific in its uses compared to other laptops, but also more energy-efficient. This makes Chromebooks widely used in industries such as education.



The following Galaxy Book Business Chromebooks are currently available:

- Galaxy Chromebook Go
- Galaxy Chromebook2 360

Galaxy Book Business vs. Galaxy Chromebook

Whether a Galaxy Book Business laptop or Chromebook is the more suitable option, of course, largely depends on what it is going to be used for. If it is sufficient to only use apps from the Google Play Store, a Chromebook is a good and budget-friendly choice. Nearly all popular apps are available.

Is an organization looking to replace their current Windows laptops? Are high performance, flexibility and personalization options desirable? Then a Galaxy Book Business laptop would be the better option.

	Galaxy Book Business	Galaxy Chromebook
Recommended use	All office applications, regardless of required computing power or capacity	Browsing the internet and using (mobile) apps from the Google Play Store
Operating system	Windows	Chrome OS
Web browser	All browsers possible	Google Chrome
Storage	Local on a hard drive, or online in the cloud	Online (in de cloud)
Applications	Almost all applications, including public as well as proprietary apps	Web-based applications from the Chrome Web Store and Android applications from the Google Play Store
Security	Security software required	Secured by Google automatically
Battery	Varies between models	Energy-efficient
Suitable for...	Business and governments	Education, logistics, healthcare, hospitality

Easy working through one ecosystem

The whole workplace can be built on Samsung devices, using the Galaxy Book Business portfolio. This way you benefit from the trusted quality and security across the board. Furthermore, you can always be confident that your various devices work well together. This makes your colleague’s work easier and makes device management simpler and more organized. That results in a great efficiency boost. More than ever, organizations are presented with a complete range of workplace solutions. This goes to show that Samsung is a partner that thinks along with businesses and offers solutions to the unique challenges they face as of 2022.



2. Unique features

Security to the core

Strong security is essential in the modern mobile workplace. It helps keep devices resilient in the face of cyber threats, and allows your colleagues to stay productive. Samsung Galaxy Book Business laptops offer rock-solid security to the core. It combines a secured core with Samsung Enhanced Security technology with Tamper alert and BIOS auto-recovery. This means the hardware is protected against threats to data security and functionality.

All Samsung laptops with Windows can be rolled out using Windows Endpoint Manager. This is a popular business solution for managing and securing laptops. It makes device management and security much easier and more efficient. Microsoft Endpoint Manager also works flawlessly with the Knox Platform and Knox Manage. That way, its possibilities can be rolled out to Android devices too. This includes Galaxy S smartphones and Chromebooks.



Durable and strong

Galaxy Book Business laptops are very durable. This is indicated, among other things, by their MIL-STD 810G-certification. The devices in the line-up are well protected against shock damage, dust and sand, vibrations, humidity, as well as temperature and latitude changes. Very useful for your colleagues in the hybrid workplace, as they are protected against damage in any situation. This contributes to productivity and device lifespan.

Smart multitasking using the S Pen

The S Pen, often associated with Galaxy Tab S tablets, is also available on Galaxy Book 360 laptops. This multifunctional stylus can be used to take notes and for photo and video editing. This way, multitasking becomes even easier.

360 degree hinge for flexible use

The Galaxy Book2 Pro 360 Business and Chromebook2 Go 360 have a useful 360 degree hinge. This makes device use even more flexible. In laptop mode, it is easy to use the keyboard and touchpad. By flipping the screen, the device enters tablet mode, which is ideal for use with the S Pen. This flexible mode is very convenient for colleagues who work in a variety of environments, as well as avid multitaskers.



3. Impressive performance

Powerful laptops for every use

The Galaxy Book Business series offers the right hardware for every use. The laptops are equipped with powerful and energy-efficient CPUs, ample RAM and sizeable internal storage. This means running all kinds of apps and heavy software and saving files will pose no trouble.

Chromebooks are designed to make working in the cloud easy, fast and carefree. Chrome OS and the Chromebooks' hardware are optimized for this specific purpose. Combined with long battery life, S Pen and Wi-Fi 6 support, users can keep working all day from any location they prefer.

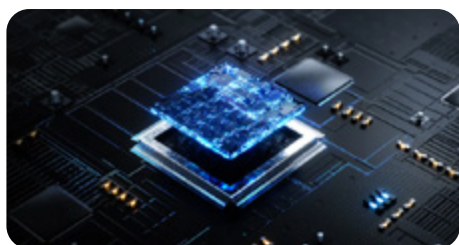
Displays & sizes

The entire Galaxy Book portfolio consists of stylish devices that are designed for sustainability. The devices are available in various screen sizes. An optimal size can be selected based on user requirements and intended uses. The Galaxy Book 360 devices can be used as laptops as well as tablets. The keyboard can be folded behind the screen so that the touchscreen can be used by itself.



The available device variants and screen sizes are:

- Galaxy Book2 Business: 14-inch or 15-inch display
- Galaxy Book2 Pro 360 Business: 13,3-inch display
- Galaxy Chromebook Go: 14-inch display
- Galaxy Chromebook2 360: 12,4-inch display



Efficient and fast processors

Galaxy Book Business laptops are equipped with an i5 or i7 Intel® Core™ processor (12th Gen) based on the new hybrid architecture. This means they can handle heavy workloads with ease. i7 processors are more powerful than i5 processors, making them suitable for even the most demanding professionals and resource-intensive applications.

Processors work together closely with RAM, and are the biggest influence on how fast a user experiences the device to be. From snappy DDR4 RAM in the base models to blazing fast LPDDR5 in the high-end models; the hardware is perfectly balanced and offers the best performance when it matters.

Lightning fast internal storage

Waiting for your laptop to boot up, or delays when loading large files – it's frustrating and it hinders productivity. Traditional hard disk drives (HDDs) are usually the bottleneck of a pc or laptop's speed. An SSD solves the bottleneck and provides quick access, as well as high reading and writing speeds. An SSD can read and write up to five times faster than an HDD. This means that if you have an SSD, you are usually ready for anything.

NVMe SSDs are another leap forwards, and can be up to six times faster than a normal SSD. Is the highest performance a priority? In that case, a laptop with an NVMe SSD is a good choice.



Get through the day without charging

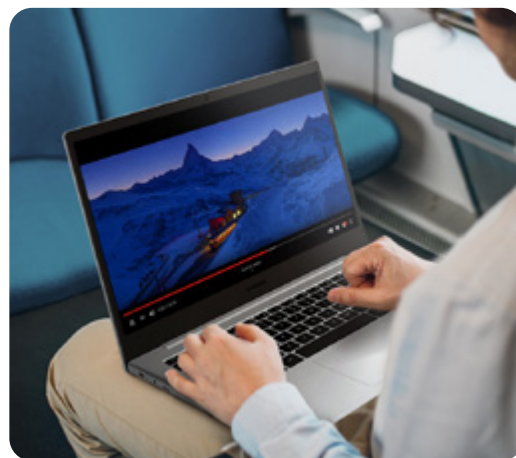
Spending the whole day using business apps, attending video calls, sending e-mails and browsing the web? The Galaxy Book Business series makes it possible. Every device in the portfolio features a battery that can last the entire day without any issues. Additionally, charging is fast on every device in the portfolio, especially the ones that have (optional) (Super) Fast Charging support.

Fast internet, everywhere

Being online is faster, more secure and carefree with Wi-Fi 6; even in crowded environments. It is the internet connection of the future. With the Galaxy Book Business range, organizations can take full advantage of that: Galaxy Book2 Business supports Wi-Fi 6.

The Galaxy Book2 Business and Book2 Pro 360 Business also support Wi-Fi 6E connections. This Wi-Fi version reaches even higher speeds and even lower latencies, compared to earlier Wi-Fi standards. To use Wi-Fi 6E, the Wi-Fi network needs to support that technology as well.

The Galaxy Book2 Business supports both Wi-Fi and 4G. This allows users to work with the Microsoft 365 suite at the office, at home and on the go more easily than ever. This allows you to work everywhere, even without an available Wi-Fi network. An important advantage of 4G over a public Wi-Fi network is that it is much more secure.

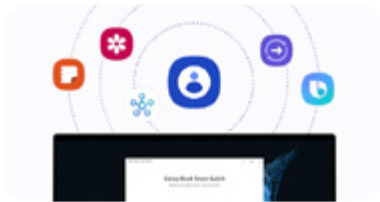


Smart connections and ports

Smart Bluetooth connectivity on Galaxy devices makes it easier to switch between devices on the fly. For example, when Galaxy Buds are paired with a Galaxy smartphone, they can also be used with a Galaxy Book Business right away. This works as long as both devices are logged into the same Samsung account. When switching between devices, the wireless earbuds are available in just a few clicks.



4. Useful Samsung features

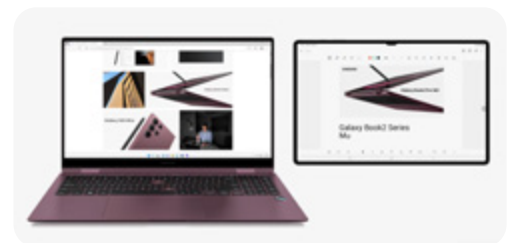


Galaxy Book Smart Switch

Device deployment should be a quick process. Setting up a device with the right apps and files can delay its deployment. Galaxy Book Smart Switch fixes that. This solution can migrate settings, apps and files to a new device in a matter of minutes. This way, new devices are ready for use more quickly.

Samsung DeX

The Galaxy Book2 Business and Book2 Pro 360 support Samsung DeX. This allows you to connect a second monitor or tv to your laptop, and creates new possibilities. With a second screen, you can either give yourself more space to work with or let both screens display the same content.

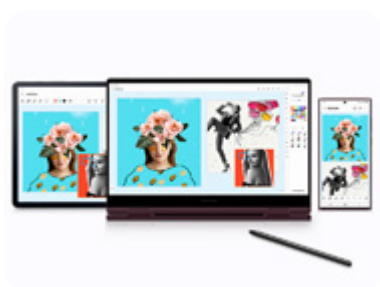


Quick Share

Sharing devices between Galaxy devices is quick and easy with Quick Share. Files can be shared between a Galaxy Book Business laptop and, for example, a Galaxy S22 within seconds. It only takes one press of the button. Quick Share even converts the file to a file type the other device supports.

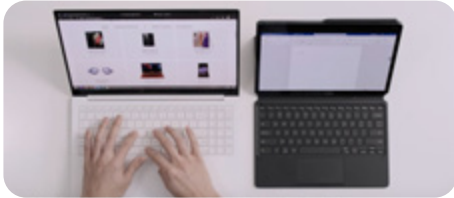
Private Share

Private Share makes sharing sensitive information more secure. This feature uses blockchain technology, and allows the sender to set an expiration date for the files. Access to the shared files can also be retracted at any moment by the sender. The recipient cannot save, share or make screenshots or screen captures of the sent data.



Second Screen

Windows-based Galaxy Book Business laptops offer convenient productivity features when combined with a Galaxy tablet or smartphone. A great example is the Second Screen feature. This allows the use of a Galaxy tablet as a second screen. This creates new possibilities for multitasking. For example, a user can use the tablet's screen for a video call, while taking notes on the laptop at the same time.

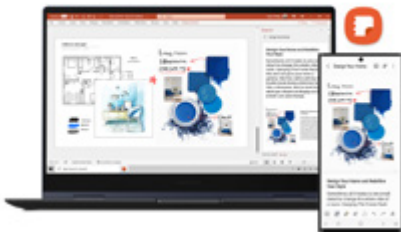
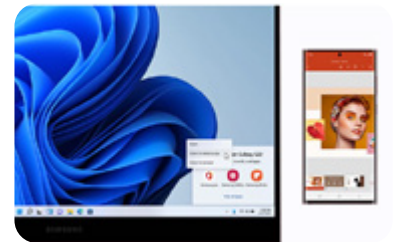


Multi Control

Multi Control is another way to make multitasking smarter. It allows the laptop's keyboard and touchpad or mouse to be used on a Galaxy tablet. Even the clipboard is shared between the two Galaxy devices. Notes, URLs and files can be copied and pasted to the other device very quickly.

Link to Windows

Link to Windows connects Galaxy Book Business devices running Windows with Galaxy smartphones. This tool can mirror the smartphone's display to the laptop's screen. Notifications, messages and phone calls appear on the desktop. Additionally, up to five smartphone apps can be opened on the laptop, and files can be transferred by dragging and dropping them from one device to the other.



One UI Book 4.0

Samsung supplies its Android devices with their own Android skin, One UI. Galaxy Chromebooks feature their own version, One UI Book 4.0. This skin makes using the Chromebooks more intuitive, improving the user experience. Icons and themes on the devices also match those on Galaxy smartphones and tablets. This leads to a seamless experience across all devices.

5. Specifications



Galaxy Book2 Business NP641BEF-KA2NL / NP641BEF-KA2BE

Display	14-inch FHD LED (1920 x 1080), Anti-Glare
CPU	Intel 12th Gen Core i7-1270P
Memory	16 GB DDR4 + 1x RAM Slot, 512 GB NVMe SSD internal storage
Graphics	Intel Iris Xe Graphics
Webcam	1080p User Facing + IR + Privacy Shutter (front camera)
Battery	51 Wh
Connectivity	802.11ax 2x2 (Wi-Fi 6E), Bluetooth
Input	1x USB Type-C, 1x Thunderbolt 4, 2x USB 3.2, 1x HDMI, RJ45, microSD, HP out/Mic-in
Dimensions	326,4 x 213,8 x 19,9 mm, 1,5 kg
Miscellaneous	Fingerprint reader on power button, infrared camera with Windows Hello, Backlit keyboard, TPM, Azerty keyboard (NP641BEF-KA2BE)
Operating system	Windows 11 Pro



Galaxy Book2 Business NP641BEF-KA3NL / NP641BEF-KA3BE

Display	14-inch FHD LED (1920 x 1080), Anti-Glare
CPU	Intel 12th Gen Core i5-1250P
Memory	16 GB DDR4 + 1x RAM Slot, 256 GB NVMe SSD internal storage
Graphics	Intel Iris Xe Graphics
Webcam	1080p User Facing + IR + Privacy Shutter (front camera)
Battery	51 Wh
Connectivity	802.11ax 2x2 (Wi-Fi 6E), Bluetooth
Input	1x USB Type-C, 1x Thunderbolt 4, 2x USB 3.2, 1x HDMI, RJ45, microSD, HP out/Mic-in
Dimensions	326,4 x 213,8 x 19,9 mm, 1,5 kg
Miscellaneous	Fingerprint reader on power button, infrared camera with Windows Hello, Backlit keyboard, TPM, Azerty keyboard (NP641BEF-KA3BE)
Operating system	Windows 11 Pro



Galaxy Book2 Business NP641BEF-KA1NL / NP646BED-KA1BE

Display	14-inch FHD LED (1920 x 1080), Anti-Glare
CPU	Intel 12th Gen Core i5-1240P
Memory	16 GB DDR4 + 1x RAM Slot, 256 GB NVMe SSD internal storage
Graphics	Intel Iris Xe Graphics
Webcam	1080p User Facing + IR + Privacy Shutter (front camera)
Battery	51 Wh
Connectivity	802.11ax 2x2 (Wi-Fi 6E), LTE, Bluetooth
Input	1x USB Type-C, 1x Thunderbolt 4, 2x USB 3.2, 1x HDMI, RJ45, microSD, HP out/Mic-in
Dimensions	326,4 x 213,8 x 19,9 mm, 1,5 kg
Miscellaneous	Fingerprint reader on power button, infrared camera with Windows Hello, Backlit keyboard, TPM, Azerty keyboard (NP646BED-KA1BE)
Operating system	Windows 11 Pro



Galaxy Book2 Business NP750XED-KB4NL / NP754XED-KB1BE

Display	15,6-inch FHD AMOLED (1920 x 1080)
CPU	Intel 12th Core i5-1235U
Memory	8 GB LPDDR4, 256 GB NVMe SSD internal storage
Graphics	Intel Iris Xe Graphics
Webcam	720p User Facing + Privacy Shutter (front camera)
Battery	51 Wh
Connectivity	802.11ax 2x2 (Wi-Fi 6E), Bluetooth
Input	2x USB Type-C, 2x USB 3.2, 1x HDMI, RJ45, microSD, HP out/Mic-in
Dimensions	356,6 x 229,1 x 15,4 mm, 1,5kg
Miscellaneous	Fingerprint reader on power button, Backlit keyboard, TPM, Azerty keyboard (NP754XED-KB1BE)
Operating system	Windows 11 Pro



Galaxy Book2 Pro 360 Business NP930QED-KJ1NL / NP934QED-KJ1BE

Display	13,3-inch FHD Super AMOLED Touch (1920 x 1080)
CPU	Intel 12th Gen Core i7-1260P
Memory	16 GB (LPDDR5) + 512 GB NVMe SSD internal storage
Graphics	Intel Iris Xe Graphics
Webcam	1080p user facing (front camera)
Battery	63 Wh
Connectivity	Wi-Fi 6E, 802.11 ax, Bluetooth
Input	2x USB Type-C, 1x USB 3.1 Thunderbolt, microSD, HP/Mic-in
Dimensions	302,5 x 202 x 11,5 mm, 1,0 kg
Miscellaneous	S Pen, fingerprint reader on power button, Backlit keyboard, TPM, Azerty keyboard (NP934QED-KJ1BE)
Operating system	Windows 11 Pro



Galaxy Chromebook Go XE340XDA-KA2NL / XE340XDA-KA2BE

Display	14-inch HD LED mat (1366x768)
CPU	Intel Celeron N4500, Dual-core, to 2.80 GHz
Memory	4 GB (LPDDR4), 64 GB e.MMC internal storage
Graphics	Intel UHD Graphics
Webcam	720p User Facing (front camera)
Battery	42,3 Wh
Connectivity	Wi-Fi 6, 802.11 ax, Bluetooth 5.1
Input	2x USB-C, 1x USB 3.2, microSD, HP out/Mic-in
Dimensions	327,1 x 225,6 x 15,9 mm, 1,45 kg
Miscellaneous	TPM, Azerty keyboard (XE340XDA-KA2BE)
Operating system	Chrome OS



Galaxy Chromebook Go XE345XDA-KA1NL / XE345XDA-KA1BE

Display	14-inch HD LED mat (1366x768)
CPU	Intel Celeron N4500, Dual-core, to 2.80 GHz
Memory	4 GB (LPDDR4), 64 GB e.MMC internal storage
Graphics	Intel UHD Graphics
Webcam	720p User Facing (front camera)
Battery	42,3 Wh
Connectivity	Wi-Fi 6, 802.11 ax, Bluetooth 5.1, LTE
Input	2x USB-C, 1x USB 3.2, microSD, HP out/Mic-in
Dimensions	327,1 x 225,6 x 15,9 mm, 1,45 kg
Miscellaneous	TPM, Azerty keyboard (XE345XDA-KA1BE)
Operating system	Chrome OS



Galaxy Chromebook2 360 XE520QEA-KB1NL / XE520QEA-KB1BE

Display	12,4-inch WQXGA LED Touch (2560x1600)
CPU	Intel Celeron N4500, Dual-core, to 2.80 GHz
Memory	4 GB (LPDDR4), 64 GB e.MMC internal storage
Graphics	Intel UHD Graphics
Webcam	720p User Facing (front camera)
Battery	45,5 Wh
Connectivity	Wi-Fi 6, 802.11 ax, Bluetooth
Input	2x USB-C, 1x USB 3.2, microSD, HP out/Mic-in
Dimensions	287,9 x 206,6 x 16,9 mm, 1,28 kg
Miscellaneous	TPM, Azerty keyboard (XE520QEA-KB1BE)
Operating system	Chrome OS